

Table of Contents

- [Pathfinder Fellowships](#)
- [Board Elections](#)
- [HMF DTS Workshop](#)
- [CUAHSI at Fall AGU](#)
- [OGC Interoperability](#)
- [Joint ASLO-NABS 2010](#)

For Your Information

Hold these Dates!

CUAHSI 2nd Biennial Colloquium,
Boulder, CO

July 19-21, 2010—Mark the date on
your calendar!

[more information](#)

Fall AGU

CUAHSI Reception at Fall AGU:

Tuesday, December 15th at the Grand
Hyatt (East Ballroom, downstairs).

Upcoming Events

December 12, 2009

[CUAHSI/HMF DTS Sensor
Workshop](#); UC Berkeley Campus
December 14-18, 2009
[AGU Fall Meeting 2009](#), San
Francisco, CA

March 13-20, 2010

[DISCCRS: Interdisciplinary Climate
Change Research Symposium](#) -
Saguaro Lake Ranch, AZ

March 22-24, 2010

[Hydrology Days 2010](#) - Colorado
State University

March 21-25, 2010

[ACS: Spring 2010 National Meeting &
Exposition](#) - San Francisco, CA

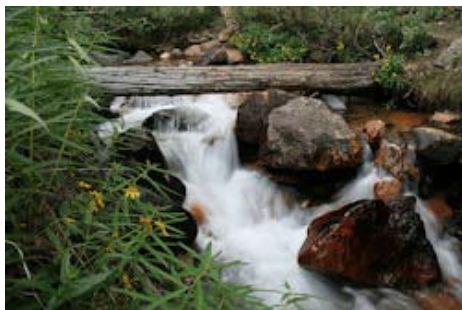
April 11-15, 2010

[National Ground Water Association
Summit](#) - Denver, CO

April 25-29, 2010

[National Water Quality Monitoring
Council 7th National Monitoring
Conference](#) - Denver, CO

Last Call! — CUAHSI Pathfinder Competition for Graduate Student Travel Grants



CUAHSI is still accepting applications from current graduate students who wish to travel to other field sites or work with other research groups as part of their graduate research program. Up to five travel grants, each with a maximum amount of \$5000.00, will be awarded. **The deadline for receipt of applications is December 31, 2009.**

In announcing these fellowships, CUAHSI Executive Director Rick Hooper noted that graduate training in hydrologic science typically focuses on a single field site or single modeling approach. To assist

graduate students in enriching their research program by moving beyond a "one site, one view" approach to research, CUAHSI is providing travel support for graduate students to make an extended visit (approximately 1-3 months) to conduct field research at an additional site or to collaborate with a research group using alternate modeling methods of those in a graduate student's current research program.

CUAHSI Pathfinder Fellowships, as these awards are called, will be awarded each year for the next 5 years. For additional information, visit www.cuahsi.org/pathfinder/.

CUAHSI Membership Meeting - Board of Directors Election Results

The following new Directors were elected at CUAHSI's annual membership meeting on December 8, 2009:

- Robyn Hannigan — University of Massachusetts-Boston
- Carol A. Johnston — South Dakota State University
- Witold Krajewski — University of Iowa
- Larry Murdoch — Clemson University
- Aaron Packman — Northwestern University

Congratulations to the new Board members. And thanks to those who also participated in the elections and to those whose terms are ending. We appreciate all your time, effort, and support.

DTS down to Earth: Principles, Applications, Operational factors, and Demonstrations for Environmental Sensing

December 12, 2009—The workshop is meant to provide a comprehensive introduction to the theory and practice of distributed temperature sensing using fiber optics to help people decide if it would be suitable for their needs. We will have lots of instruments, fiber, and the tools required to put the systems together in Berkeley, and you will have 4 hours to try your hand at every aspect of the process. [[Learn about the DTS workshop](#) || [Fiber optics background paper](#)].

May 2-7, 2010
EGU General Assembly 2010 -
Vienna, Austria
[special sessions](#)
May 25-29, 2010
BALWOIS 2010 Conference - Water
Observation and Information Systems
for Decision Support - Ohrid, Republic
of Macedonia
June 6-11, 2010
2010 Joint Summer Meeting with
ASLO & NABS - Santa Fe, NM
June 27-July 1, 2010
Joint Federal Interagency Conference
on Hydrologic Modeling and
Sedimentation - Las Vegas, NV
August 23-27, 2010
ASCE 2010 Watershed Management
Conference - Madison, WI

Contact CUAHSI

2000 Florida Avenue, N.W.
Washington, D.C. 20009
Phone: (202) 777-7306
FAX: (202) 777-7308
Website: www.cuahsi.org
Email: commgr@cuahsi.org

Planning Your Fall AGU Schedule

Evening events on Tuesday of Fall AGU Meeting

- **CUAHSI Reception at Fall AGU:** Tuesday, December 15th at the Grand Hyatt (from the lobby take 2 sets of escalators down to the Ballroom Level, the Ballroom East is straight ahead on the left)—meeting begins at 6:30pm; reception following until 9:00pm. Hors d'oeuvres & libations will be served.
- On Tuesday afternoon, December 15, in Moscone Center 102 a special Hydrology session on "**Progress in Hydrologic Science since the Blue Book**" is scheduled. Pete Eagleson will make a few opening remarks and we have a great line up of speakers. This session is in honor of Doug James who is retiring from NSF.

OGC Seeks Participants for International Hydrology Interoperability Experiment

The Open Geospatial Consortium (OGC) will launch a Hydrology Interoperability Experiment (HDWG_IE1) on December 8, 2009. The initiators of the experiment seek participation by other organizations interested in developing standard ways of discovering, sharing and interpreting groundwater data using OGC Web Services (OWS) interface and encoding standards [www.opengeospatial.org/standards].

This interoperability experiment will advance the development of WaterML 2.0 [his.cuahsi.org/wofws.html] and test its use with various OWS standards, including the OGC Sensor Observation Service (SOS), Web Map Service (WMS), Web Feature Service (WFS), and Catalog Service Web (CSW) Interface Standards. The experiment will also investigate the interaction of WaterML 2.0 with GroundwaterML ([GWML](http://www.gwml.org)) in scenarios involving the sharing of groundwater data between the USA and Canada.

Initiators of the experiment are: Natural Resources Canada (NRCan), US Geological Survey (USGS), and Australia's Commonwealth Scientific and Industrial Research Organisation (CSIRO). Organizations participating in the experiment will include the Geology Survey of Canada (GSC), NRCan; USGS; CSIRO, the Consortium of Universities for the Advancement of Hydrologic Science (CUAHSI) and others.

Applications for participation are due by December 8, 2009. For further details or to register as a participant visit the [Groundwater Interoperability Experiment website](http://www.opengeospatial.org).

The OGC is an international consortium of more than 385 companies, government agencies, research organizations, and universities participating in a consensus process to develop publicly available geospatial standards. The OGC's OpenGIS(r) standards Support interoperable solutions that "geo-enable" the Web, wireless and location-based services, and mainstream IT. These standards empower technology developers to make geospatial information and services accessible and useful with any application that needs to be geospatially enabled. Visit the OGC website at www.opengeospatial.org.

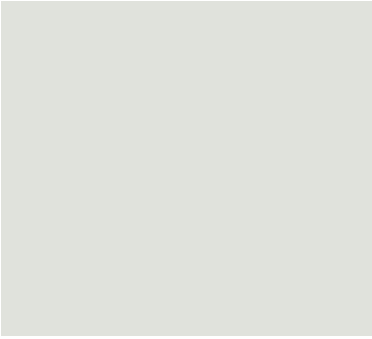
Joint ASLO-NABS 2010 Summer Meeting Special session

A special session entitled "Stream network connections: quantifying hydrological, chemical and biological linkages" is planned for the [2010 Joint ASLO-NABS 2010 summer meeting](http://www.aslo-nabs.org) to be held June 6-11 in Santa Fe, New Mexico.

The formal Call for Papers is expected later this month, with abstracts due by 12 February, 2010.

The symposium objectives are:

- Review and develop physical and biological concepts for understanding linkages within stream networks – from headwaters to estuaries
- Highlight innovative research approaches illustrating hydrological, chemical or biological connectivity within stream networks at watershed scales
- Develop and expand whole-network approaches for characterizing, modeling, and



predicting stream network behavior.

Through case studies, applications of new technologies, and modeling approaches, this symposium will provide an opportunity to share and synthesize information on whole-network research. Participants will acquire new information that will encourage novel research approaches, and stimulate additional synthesis and tool development for quantifying hydrological, chemical and biological linkages within stream networks.

Questions may be directed to Joe Ebersole (ebersole.joe@epa.gov).
