

Technical & Social Events

Technical tours and social events are being planned for Watershed Management 2010. Please visit the website for the most up-to-date information.

<http://www.asce.org/conferences/watershedmanagement2010>

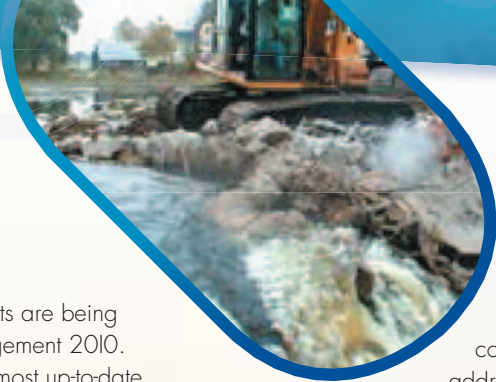
Invitation to Sponsor!

Companies are invited to become conference sponsors. Your financial support will help enhance the program and conference experience, while providing your company increased visibility among the leaders worldwide who are managing water resources in a non-stationary world. To sponsor this conference and its activities, please contact Wendy Ashburn at WM2010ExhibitSponsorship@asce.org or (240) 776-4237.

Invitation to Exhibit

—Put Your Company in the Spotlight!

Get your organization's name before the most qualified decision makers in the industry. A trade exhibition will run throughout the conference with the opening reception and all breaks held in the exhibit hall to maximize exposure. To inquire about booth space, contact Wendy Ashburn at WMEExhibitSponsorship@asce.org or (240) 776-4237.



How to Submit Your Abstract

Abstracts should describe the theme and content of the proposed paper and should address one or more of the conference topics in this call for papers or the more detailed list appearing on the conference website.

In addition, your abstract must:

- Be 500 words or less, written in English
- Include the full paper title
- List the job title, organizational affiliation, postal mailing address, telephone, fax and e-mail address of the author(s).
- Identify the Official Contact Author – the individual who will receive and respond to communications regarding the paper.
- Identify the Official Conference Participant Author – The individual who will register for the conference upon paper submittal.

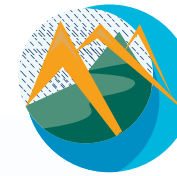
Submit your abstract electronically via the conference website at <http://www.asce.org/conferences/watershedmanagement2010>.

All submissions must be uploaded via the conference's online submission website. Email submissions will NOT be accepted.

WATERSHED
2010
Management Conference
Innovations
in Watershed
Management
Under Land Use
and Climate Change



1801 Alexander Bell Drive
Reston, VA 20191 4400



WATERSHED
2010
Management Conference

Innovations
in Watershed
Management
Under Land Use
and Climate Change



Announcement and
Call for Papers

August 23-27, 2010

Madison, Wisconsin

ASCE
American Society of Civil Engineers



www.asce.org/conferences/watershedmanagement2010

The 2010 Watershed Management Conference, "Innovations in Watershed Management Under Land Use and Climate Change" is sponsored by the Environmental & Water Resources Institute (EWRI) of the American Society of Civil Engineers (ASCE).

This will be the tenth in a series of interdisciplinary specialty conferences focused on watershed management. The conference was first held in Billings, Montana, in 1965 and has been sponsored by ASCE at five-year intervals since. This year's conference will be held downtown on Lake Monona in Madison, Wisconsin.

Climate change has the potential to undermine our traditional approaches for managing water resources in developed and developing areas. In response we must evaluate and improve the ways in which we design, manage, operate, and regulate water resource practices and facilities. This demands a partnership between researchers, practitioners, managers, regulators, and the public.

This conference will highlight innovative approaches for managing water resources under climate and land use change. Relevant topics include hydrologic measurement and modeling, integrated and/or adaptive water management, aquatic ecosystem restoration, risk-based design, and the use of regional predictions of climate change. We expect to attract a diverse group of researchers, practitioners, managers, and regulators, and will engage them in one or more activities focused on bridging the gap between research and practice.

Please join us August 23-27, 2010 in Madison, Wisconsin, and continue the tradition of the nine previous Watershed Management conferences. We hope that you take advantage of this opportunity to share your knowledge, technical experiences, and practicing expertise in this important field by submitting an abstract for presentation at this meeting.



Conference Topics

The following is a sample list of conference topics. For a full list of topics, please visit the conference website at: <http://www.asce.org/conferences/watershedmanagement2010>

- Water Resources Planning, Design, and Management under Climate and Land Use Change
- Policy Innovations in Managing Water Quality (economic incentives; inter-jurisdictional agreements; integrated water management; adaptive water management)
- Bridging the Gap between Science and Practice (decision-support systems; cyber-infrastructure; community-based approaches)
- Restoration of Aquatic Ecosystems (dam removal; riparian restoration; wetland restoration)
- Mitigating the Hydrologic Impacts of Development (peak flow; volume; groundwater recharge; water quality)
- Mitigating the Hydrologic Impacts of Agriculture (sediment and nutrient transport)
- Innovations in Watershed Modeling
- Hydrologic Measurement at Multiple Scales
- Regional Predictions of Climate Change
- Current Issues in Watershed Management
- Managing Hydrologic Extremes

Conference Format

The four-day conference will include a plenary session, technical sessions, poster sessions, workshops, trade exhibits, technical, and several networking events. Authors are expected to orally present their papers in a technical session or poster session. Proceedings will be provided onsite at the conference.

Key Dates

One-Page Abstract Due: August 12, 2009
 Author Notification: October 7, 2009
 Final Paper Due: April 21, 2010
 Conference: August 23 – 27, 2010



Hotel Information

The host venue for the 2010 Watershed Management Conference will be the Hilton Madison Monona Terrace Hotel. Located in the heart of downtown Madison and overlooking beautiful Lake Monona, this hotel boasts spectacular views of the city and surrounding lakes. The Hilton Madison hotel is connected via a climate controlled skywalk to the Frank Lloyd Wright inspired Monona Terrace Community and Convention Center and is just a short walk from the Wisconsin Capitol Building, cultural venues, fine dining, the University of Wisconsin and a robust downtown shopping district.

Hilton Madison Monona Terrace Hotel
 9 East Wilson Street • Madison, Wisconsin 53703

About Madison, Wisconsin

- The beautiful city of Madison is nestled amid four glacier-created lakes.
- Madison has repeatedly been named one of the nation's most livable cities.
- Visitors are entranced by treasures the earth has given up at the University's Geology Museum.
- The Olbrich Botanical Gardens in Madison boasts both outdoor venues and a dramatic glass conservatory filled with tropical specimens.
- Outdoor enthusiasts and nature lovers will relish the 1200 acres of preserved land at the University's Arboretum.
- The Aldo Leopold Nature Center, named after Wisconsin's most noted conservationist, promotes good stewardship of the natural world.
- At the Taliesin, a 600-acre complex of structures and landscapes, you will see tangible evidence of Frank Lloyd Wright's architectural genius.
- Treat yourself to a special-occasion meal at the famous Johnny Delmonico's steak house!
- L'Étoile, the city's most renowned restaurant, features the best local ingredients married with French culinary tradition.
- Enjoy the kitschy charm at Lombardino's, one of Madison's most recognizable Italian eateries.
- Gracious and sophisticated, Restaurant Magnus is lauded for both cuisine and nightlife.

For detailed information on what Madison has to offer, please visit <http://www.visitmadison.com/>.

//// Organizing Committee

Conference Chair & Sponsorship Chair
Kenneth W. Potter, Ph.D., M.ASCE,
University of Wisconsin-Madison
 kwpotter@wisc.edu

Conference Co-Chair & Technical Program Chair
Donald K. Frevert, Ph.D., P.E., F.ASCE, D.WARE
Retired U.S Bureau of Reclamation
 dkfrevert@netzero.net

Members
R. Edward Beighley, Ph.D., A.M.ASCE, *San Diego State University*
 beighley@mail.sdsu.edu
Richard H. Hawkins, Ph.D., P.E., M.ASCE, *University of Arizona*
 rhawkins@ag.arizona.edu
Glenn E. Moglen, Ph.D., A.M.ASCE, *Virginia Tech*
 moglen@vt.edu

G.Padmanabhan, Ph.D., P.E., F.ASCE,
North Dakota State University
 G.Padmanabhan@ndsu.edu

Ranvir Singh, M.Sc.C.E., M.Sc.S.E., P.E., M.ASCE, Retired,
U.S. Department of the Interior,
 ranvirsingh@hotmail.com

Donald E. Woodward, P.E., M.ASCE, *American Forests*
 dew7718@comcast.net

Staff
Brian Parsons, P.E., M.ASCE, *EWRI Director*
 bparsons@asce.org

Autumn Richter, EWRI Manager
 arichter@asce.org

Stacey Ann P. Gardiner, CMP, *Conference Manager*
 stacey.gardiner@tgggroup.com